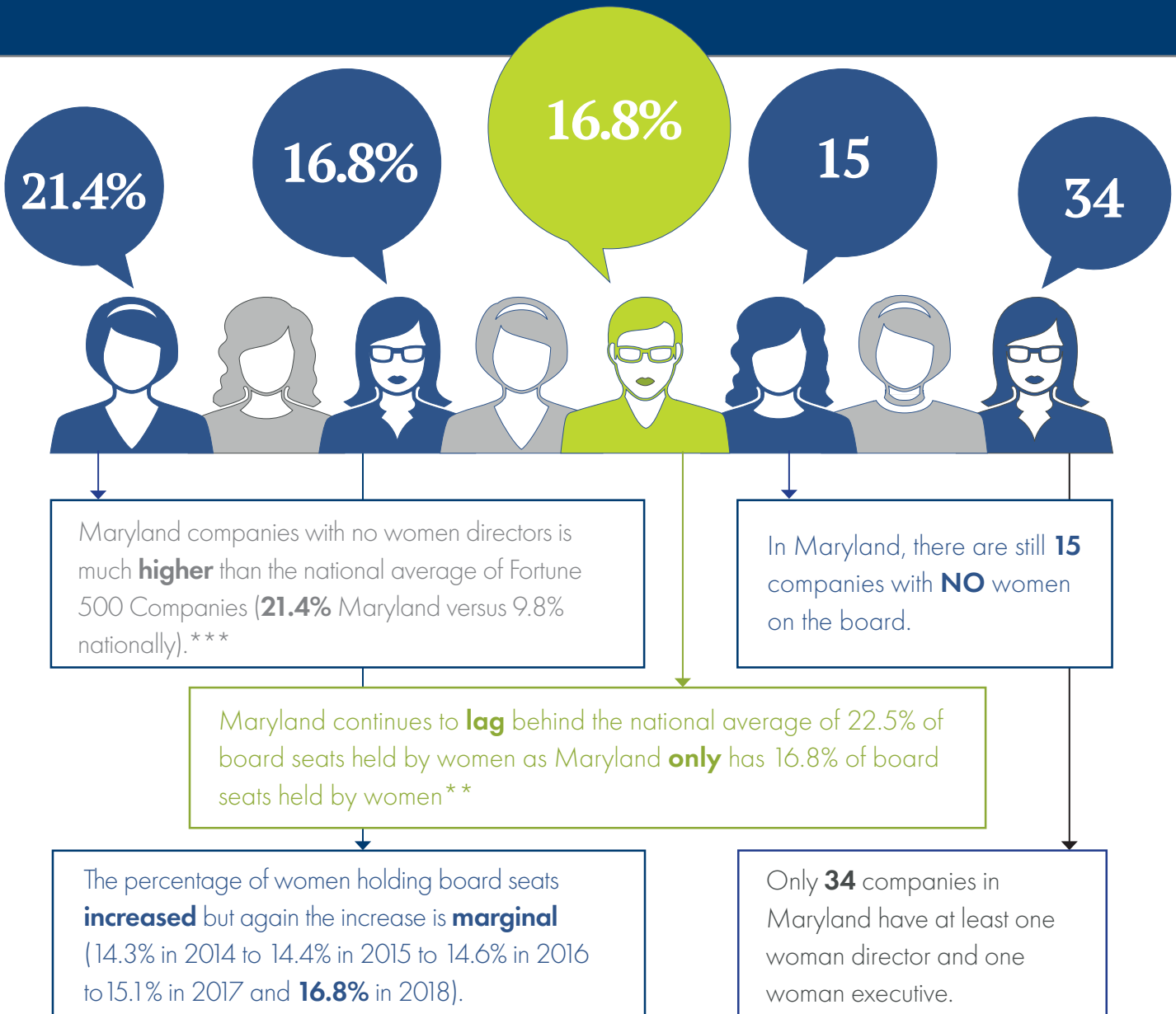


# JOIN EXECUTIVE ALLIANCE IN STANDING SO THAT WOMEN CAN HAVE A SEAT IN BOARD ROOMS ACROSS MARYLAND

## 2019 CENSUS - Women Board Directors in Maryland\*

### EXECUTIVE SUMMARY

### *Women Underrepresented in Board Room*

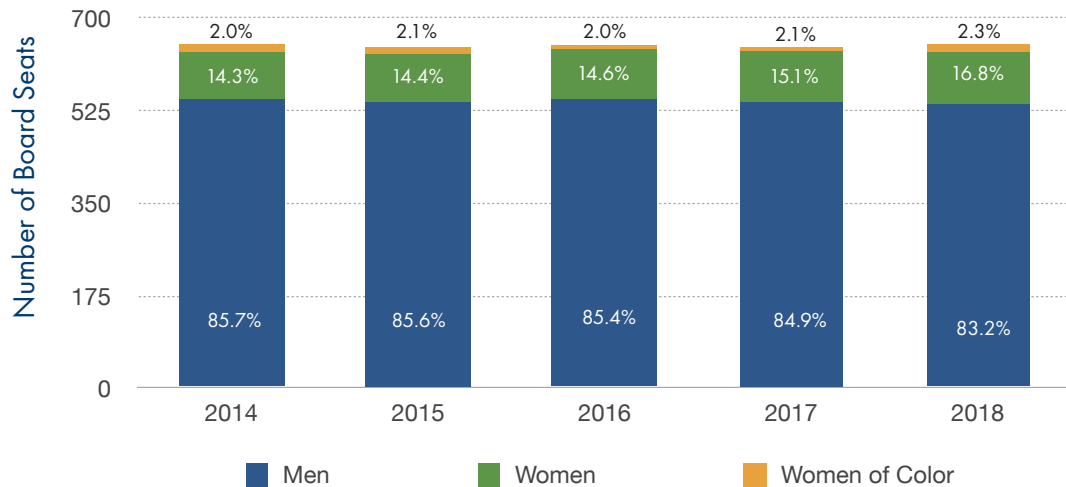


\* Based on July 1, 2017 through June 30, 2018 proxy statements and annual reports.

\*\* Source: [HTTPS://corp.gov.law.harvard.edu/2019/02/05/missing-pieces-report-the-2018-board-diversity-census-of-women-and-minorities-on-fortune-500-boards/](https://corp.gov.law.harvard.edu/2019/02/05/missing-pieces-report-the-2018-board-diversity-census-of-women-and-minorities-on-fortune-500-boards/)

\*\*\* Source: [www.Fortune.com/2018/05/22/fortune-500-companies-women-boards](http://www.Fortune.com/2018/05/22/fortune-500-companies-women-boards)

The Number of Board Seats Held by Women Improved Marginally



Percentage of Board Seats held by



Percentage of Companies with No Women Executives Remains Unchanged

EXECUTIVE ALLIANCE  
2018-2019 OFFICERS

PRESIDENT  
Pat Lambert

PRESIDENT ELECT  
Lisa Hayes

VICE PRESIDENT  
Karen Singer

SECRETARY  
Margaret Wood

TREASURER  
Mary Jean Herrom

IMMEDIATE PAST PRESIDENT  
Karen Bond

EXECUTIVE DIRECTOR  
Luwanda Jenkins

P.O. Box 16371  
Baltimore, MD 21210  
410-929-4026

Executivealliance.org

### Companies with NO Gender Diversity (NO female board members or executives)

GSE Systems, Inc.

India Globalization Capital, Inc.

Novavax, Inc.

REGENXBIO, Inc.

Supernus Pharmaceuticals, Inc.

Synthetics Biologics, Inc.

### Companies where women held 20% or more of Board Seats

2U, Inc.\*

AGNC Investment Corp.

Choice Hotels International

CIENA Corp.

Colfax Corporation

The Community Financial Corporation

Eagle Bancorp, Inc.

Emergent Biosolutions, Inc.

Federal Realty Investment Trust\*

First United Corporation\*

Glen Burnie Bancorp

Global Medical REIT, Inc.\*

GlycoMimetics, Inc.\*

GP Strategies Corporation\*

Hannon Armstrong Sustainable Infrastructure Capital, Inc.\*

Hamilton Bancorp, Inc.\*

Host Hotels & Resorts, Inc.\*

The KEYW Holding Corporation

Legg Mason, Inc.\*

Marriott International, Inc.\*

McCormick & Co., Inc.\*

MTGE Investment Corp.\*

Omega Healthcare Investors, Inc.

OpGen, Inc.\*

Pebblebrook Hotel Trust\*

RLJ Lodging Trust\*

Sandy Spring Bancorp

T. Rowe Price Group, Inc.\*

Under Armour, Inc.

United Therapeutics, Corp.\*

W.R. Grace & Co.\*

\* 25% or more women directors